



Jean Michel

BY KEV'S

2 0 1 8

SPRING / SUMMER



DRESS STYLE
— SSW 1808



T SHIRT LILY
— SSW 1812

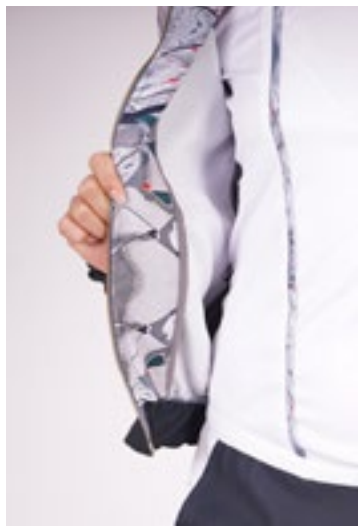
PANTS IRIS
— SSW 1810



DRESS LEAF
— SSW 1809



DRESS NATURE
— SSW 1816



BOMBER VIOLET
— SSW 1813

TOP ROSE
— SSW 1814

SHORT DAISY
— SSW 1811



DRESS MIMOSA
— SSW 1832



TOP MAPLE
— SSW 1830

SKIRT PINE
— SSW 1831



DRESS TULIP
— SSW 1825



DRESS GARDENIA
— SSW 1826



PANTS OAK
— SSW 1829

BLOUSE PALM
— SSW 1828





DRESS WILLOW
— SSW 1827



DRESS FLEUR
— SSW 1824



TOP GLASS
— SSW 1822

PANTS SUN
— SSW 1821



DRESS ALPHA
— SSW 1817



PAGE 16

DRESS RIVER
- SSW 1820

BLUE SKY
- SSW 1818



PAGE 17

DRESS BOW
- SSW 1819

SUIT WATER
- SSW 1823



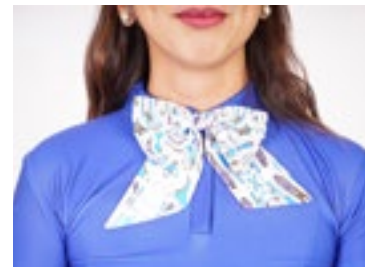
DRESS ELM
— SSW 1802



DRESS IVY
— SSW 1803



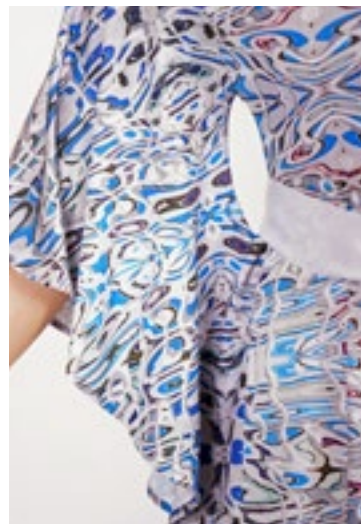
DRESS HOLY
— SSW 1801



SHIRT BERRIES
— SSW 1804

SKIRT BIRCH
— SSW 1805

BOWTIE LYSA
— SSW 1800



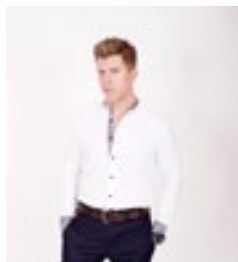
BLOUSE RAY
— SSW 1807

PANTS TWIG
— SSW 1806



SUIT ROOT
— SSM 1833

SHIRT PETALS
— SSM 1838



JACKET NEEDLE
— SSM 1835

T SHIRT CACTUS
— SSM 1837

SHIRT
— SSM 1839



PANTS ROCK
— SSM 1840

TSHIRT LEAVE
— SSM 1836

BOMBER SHOOT
— SSM 1834

COLLABORATION

Jean Michel BY KEYS



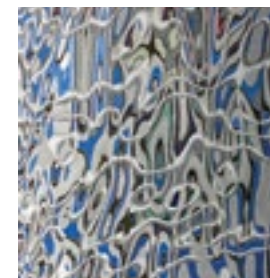
When Marlyse and Jean Michel met in late 2016, it didn't take them long to identify some common interests. Marlyse being a seasoned cloth designed, trained in Italy before immigrating in Canada, and Jean Michel being a long term photographer now transforming his nature photographs in beautiful patterns, a collaboration was decided right way to bring to a new collection "Nature and Style" the beautiful printed fabrics of Jean Michel to the designer talents of Marlyse.

DESIGN STORIES



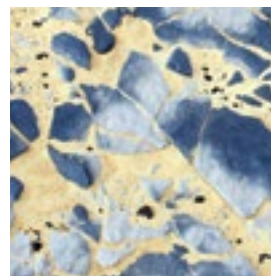
STUDIO BELL-NATIONAL MUSIC CENTER, CALGARY - CANADA

The characteristic tiles covering this impressive new building gives it a familiar face in the East Village, as if a new music shuttle landed in the core of the City.



OLYMPIC PLAZA, CALGARY - CANADA

In the center of town, the surrounding buildings of the 1988 Winter Games Olympic Plaza play with its water pool, reflecting them in a sort of gigantic spaghetti bowl.



BLUE DESERT, EGYPT

The gorgeous mixture of white sands and blue rocks creates a dramatic flow of elegance. The patterns closely resemble the textile ones in the Maghreb region, or the Delft Faience in the Netherlands.



PHILHARMONIE, PARIS - FRANCE

"La Philharmonie" is an impressive music dedicated building emerging recently in the North East of Paris. His architecture makes it look like a big shield, reflecting all type of objects around.

Jean Michel

BY KEM'S

hello@ByJeanMichel.com
kempfashiondesigner@gmail.com

www.ByJeanMichel.com

www.KemsFashion.com

    /ByJeanMichel

COVER PAGE:
SALOPETTE ORCHID
— SSW 1808

